

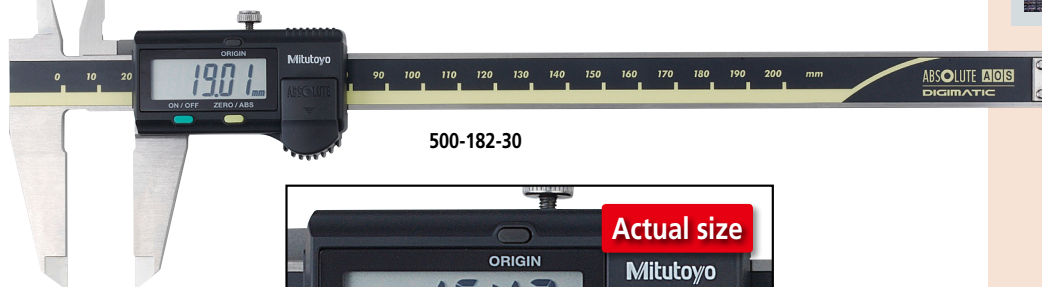
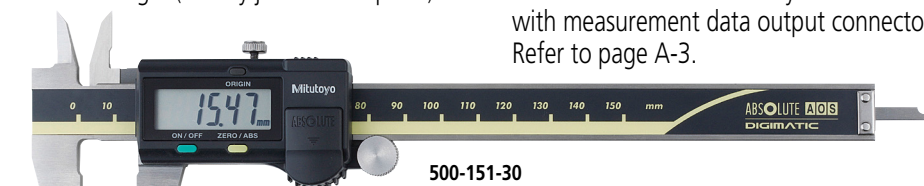
Calipers

An industry standard measuring tool

ABSOLUTE Digimatic Caliper 500 Series — with exclusive ABSOLUTE Encoder Technology

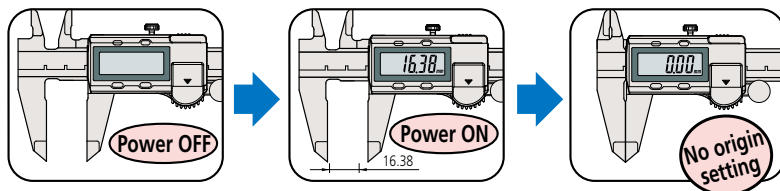
MeasurLink[®] ENABLED
Data Management Software by Mitutoyo

- An ABSOLUTE electromagnetic induction linear encoder system is incorporated (except for 0 - 300 mm / 0 - 12 inch models).
- New ergonomic design with finger rest.
- The ZERO/ABS button allows the display to be Zero-Set at any slider position along the scale for comparison measurements. This button will also allow return to the absolute (ABS) mode and display of the true position from the origin (usually jaws closed point).
- Large and clear LCD readout.
- Smooth slider movement makes for comfortable operation.
- 18,000 hours battery life.
- Allows step measurement.
- Carbide-tipped jaw calipers are optimal for rough finished parts, castings, grinding stones, etc.
- Allows integration into statistical process control and measurement systems for models with measurement data output connector. Refer to page A-3.



Remarkably easy
to read display

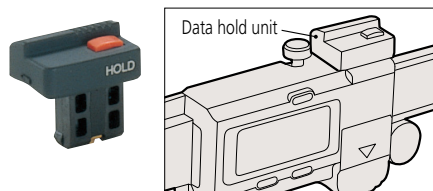
A built-in ABS (absolute) scale means that these calipers are ready to use immediately after power-on without origin resetting – just like using a vernier caliper.



Optional accessories

Dedicated for the models equipped with a digimatic output function. For details, refer to page D-39.

959143: Data hold unit



Connecting cables for IT/DP/MUX

- 959149: SPC cable with data button (1 m)
- 959150: SPC cable with data button (2 m)



USB Input Tool Direct

- 06AFM380C: SPC cable for USB-ITN-C (2 m)

Wireless data output **U-WAVE^{fit}**
U-WAVE-TC: 264-620 (IP67 type)
264-621 (Buzzer type)

Connecting unit for U-WAVE-TC:
02AZF310 (IP67 type)
02AZF300 (Buzzer type)
Refer to page A-15 for details

MeasurLink[®] ENABLED
Data Management Software by Mitutoyo

Products equipped with the measurement data output function can be connected to the measurement data network system MeasurLink (refer to page A-5 for details).

ABSOLUTE[™]

(Refer to page X for details.)



An inspection certificate is supplied as standard. Refer to page X for details.

Technical Data

Accuracy: ± 0.02 mm (≤ 200 mm), ± 0.03 mm (≤ 300 mm)
(excluding quantizing error)

Resolution: 0.01 mm or 0.0005 in / 0.01 mm

Repeatability: 0.01 mm

Display: LCD

Scale type*: ABSOLUTE electromagnetic induction linear encoder

*ABSOLUTE electrostatic capacity static linear encoder for 0 - 300 mm / 0 - 12 inch models.

Max. response speed: Unlimited

Battery: **SR44** (1 pc), **938882**,

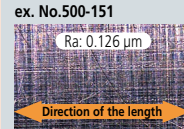
for initial operational checks (standard accessory)

Battery life: Approx. 5 years under normal use (18,000 hours for continuous use)

Smooth slider movement makes for comfortable operation.

High quality guide surface finish for smooth slider movement

Conventional
ex. No.500-151



ABSOLUTE Digimatic Caliper
ex. No.500-151-30

